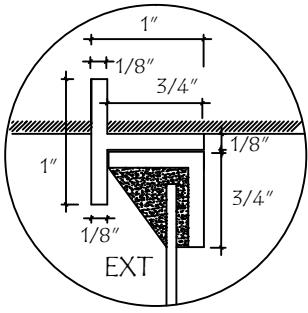
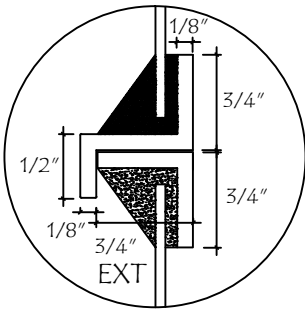


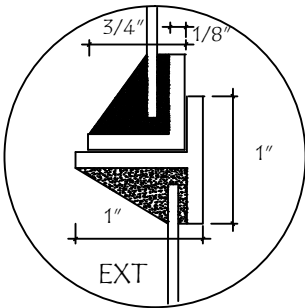
Detalle de Juntas de Aberturas Metàlicas



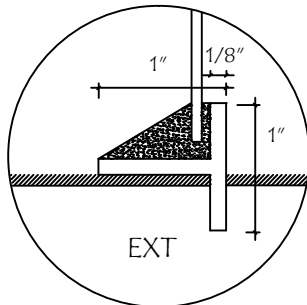
A-A



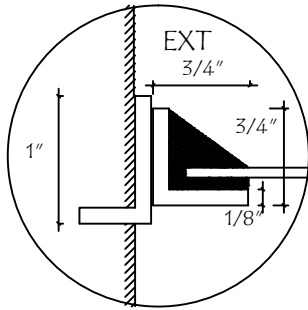
B-B



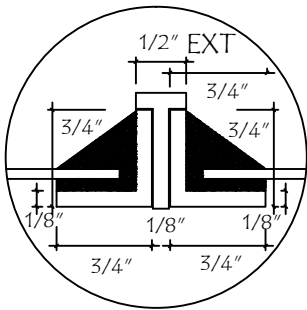
C-C



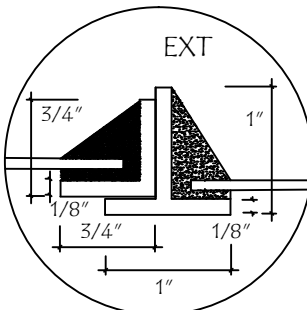
D-D



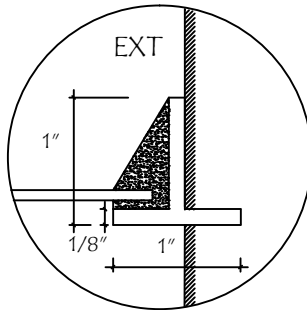
H-H



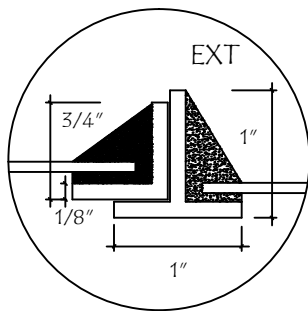
I-I



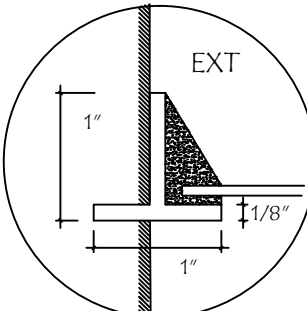
J-J



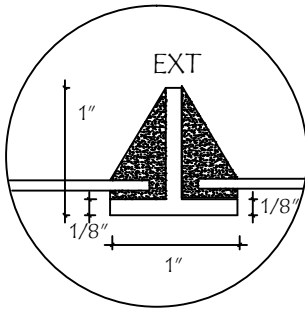
K-K



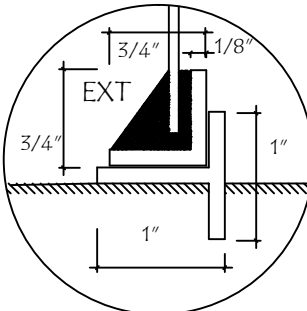
N-N



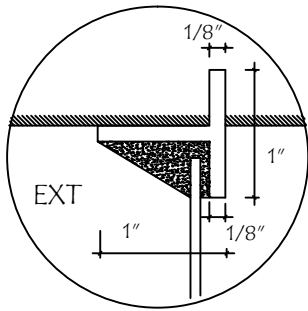
N̄-N̄



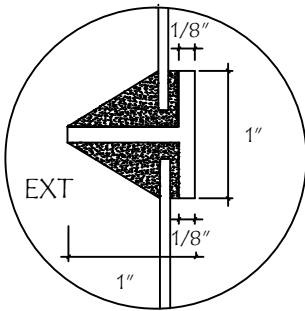
O-O



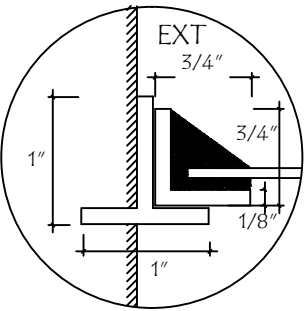
P-P



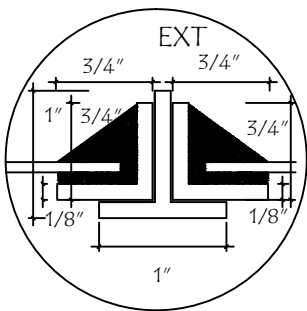
E-E



F-F



L-L



M-M

MINISTERIO DE EDUCACION Y CIENCIAS
DIRECCION DE INFRAESTRUCTURA

PROYECTO Refacci3n de 3 aulas de 5,80 x 6,80 c/techo de tejas

Detalle de Juntas de balanc3n

sin escala

7